

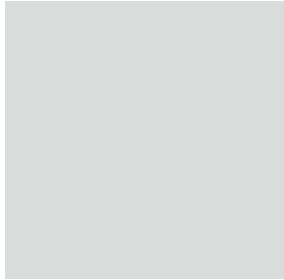
# NEW PRODUCTS GUIDE



WHAT GREAT SYSTEMS ARE BUILT ON™

NEW

# WHAT GREAT SYSTEMS ARE BUILT ON™



FORWARD FAMILY

PG. 4

RACKS AND ENCLOSURES

PG. 12

TECHNICAL FURNITURE

PG. 14

POWER

PG. 17

BRAND STORY

PG. 19





Middle Atlantic Products, an AV brand of Legrand, has manufactured exceptional support and protection products to mount integrated AV systems in Residential, Commercial, Broadcast, and Security applications since 1979. Offering innovative system enclosures, tech-enabled furniture and power products, Middle Atlantic is committed to providing complete and unmatched AV infrastructure solutions and services.

At the heart of a great AV experience, you'll find Middle Atlantic Products - what great systems are built on™.

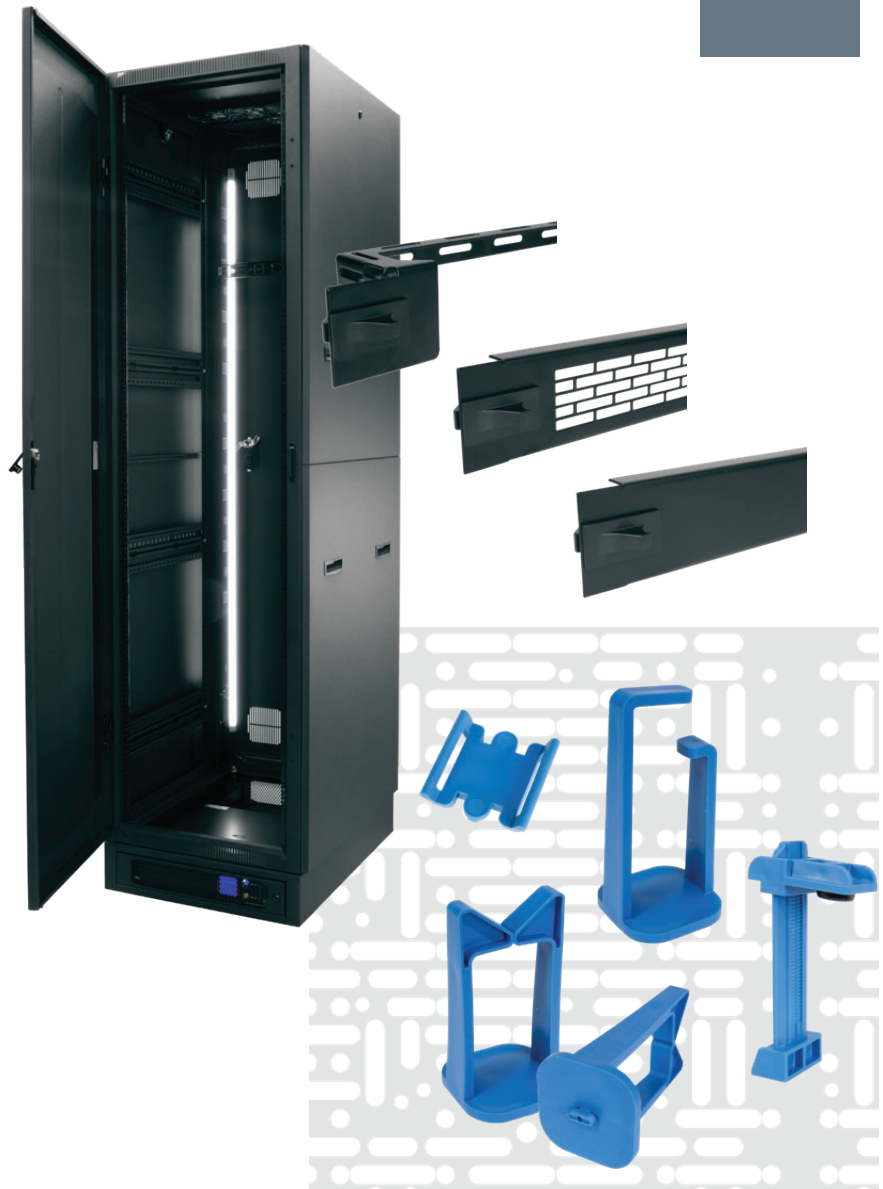
NEW

## FORWARD FAMILY INTRODUCTION

### INTRODUCING FORWARD

#### FOR TODAY'S SYSTEM AT TOMORROW'S SPEED

Enabling **5X FASTER INSTALLATION** of everyday rack builds so you can focus on what matters – delivering the ultimate AV experience.



### REDEFINED RACKRAIL FOR THE FASTEST INSTALLATION

NOW INCLUDED IN ALL BGR  
SERIES ENCLOSURES

#### **HARDWARE FREE IS THE WAY TO BE.**

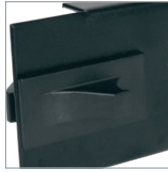
The threaded rail includes a square hole that unlocks the ability for all of our Forward panels, vents and cable management to be clicked in without using **ANY** rack screws!

# FORWARD FAMILY

## BLANK, VENT & DIN PANELS AND LACER BARS

NEW

### UNLEASH YOUR INNER SPEED DEMON AND LOSE THE DRILL



- **No rack screws!** Easily install & remove your vent panels without any hardware
- 5X faster installation over traditional rack screw installation
- Ergonomic clips for easy installation and removal
- Spring loaded clips secure panel into the Forward rackrail
- Durable flanged steel construction
- Compatible with Forward rackrail & enclosures



#### ACCESSORIES COMPATIBLE WITH FORWARD RAIL STANDARD IN ALL BGR SERIES

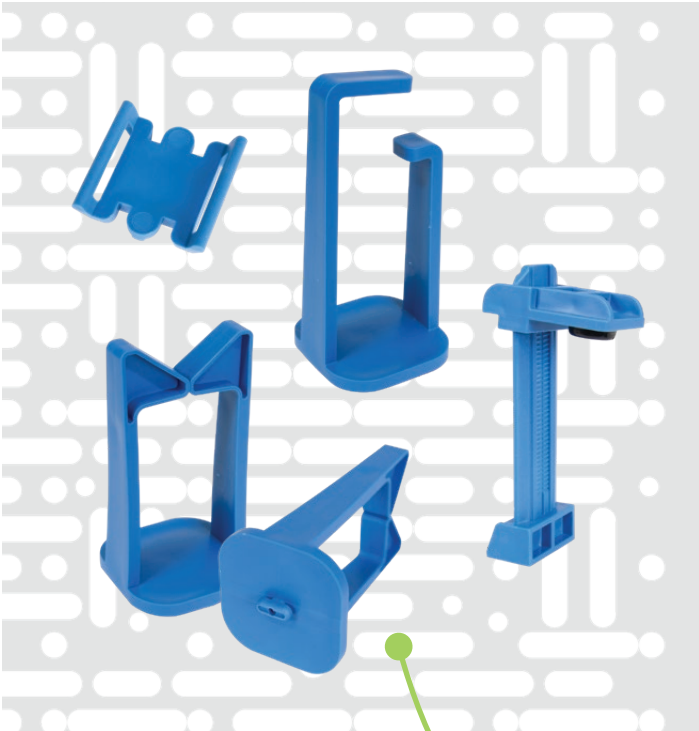
	Part #	Description	Finish	RU
BLANK PANELS	FWD-EB1	Flanged blank panel	Flat Black	1
	FWD-EB2		Flat Black	2
	FWD-EB3		Flat Black	3
	FWD-EB4		Flat Black	4
	FWD-SB1		Textured	1
	FWD-SB2		Textured	2
	FWD-SB3		Textured	3
	FWD-SB4		Textured	4
DIN MODULE PANEL	FWD-DIN1H	DIN rail panel	Flat Black	1
VENT PANELS	FWD-VT1	74% perforated	Flat Black	1
	FWD-VT2	74% perforated	Flat Black	2
	FWD-VT3	74% perforated	Flat Black	3
	FWD-VT4	74% perforated	Flat Black	4

	Part #	Description	Offset	RU
HORIZONTAL CABLE MANAGEMENT	FWD-LB-1A-4PK	forward straight "L" style lace bar, 4 pack	0"	1
	FWD-LB-2A-4PK	forward 2" offset "L" style lace bar, 4 pack	2"	1



**FORWARD FAMILY**  
**CABLE MANAGEMENT & SMALL DEVICE MOUNTING**

NEW



LOSE THE  
DOUBLE-SIDED TAPE,  
TINY SCREWS & BUBBLE GUM

**THERE'S A BETTER WAY**

- Pop and twist to install anywhere in our patented universal hole pattern without any hardware
- The bold blue finish helps you identify your accessories in a fully loaded enclosure for any future adds, moves or changes

**SMALL DEVICE MOUNTING CLAMPS**

- Soft rubber pad included on the clamp to keep your device brand new
- Made from durable nylon
- Easily trim excess material if necessary for a clean look
- Accommodates devices up to 2" tall

C-Rings (vertical)  
D-Rings (horizontal)  
& Tie Saddles

PATENTED  
universal hole pattern

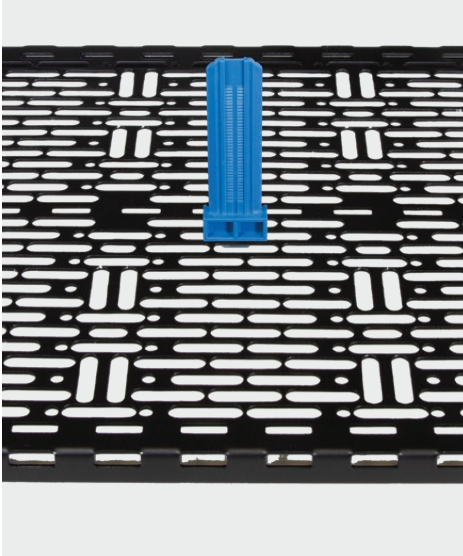


# FORWARD FAMILY

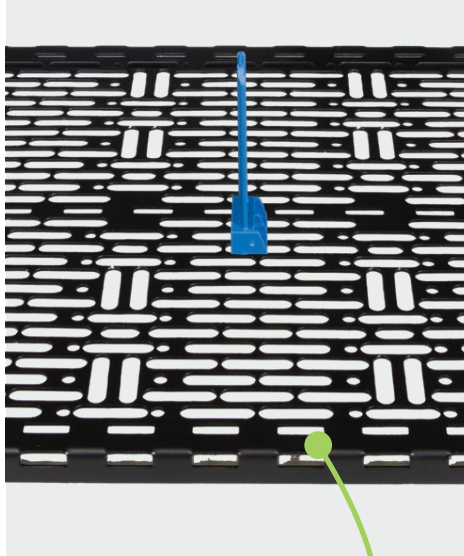
## CABLE MANAGEMENT & SMALL DEVICE MOUNTING

NEW

POP



TWIST



ZIP



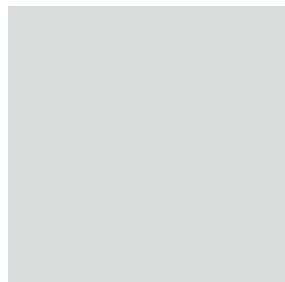
FWD-SIDECLMP-4 shown

PRODUCTS WITH THE PATENTED UNIVERSAL HOLE PATTERN:

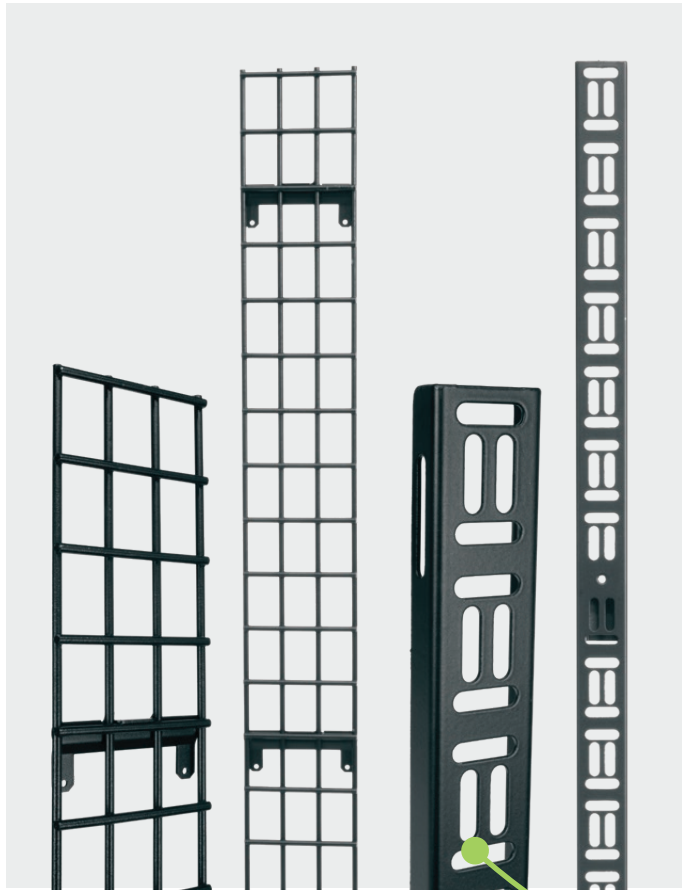
- Lever Lock™
- UMS, MS & UFA Shelves
- Forward Rackrail
- UMV Cable Management
- RSH 1RU

	Part #	Description	Qty Per Pack	Finish
SMALL DEVICE MOUNTING	FWD-SIDECLMP-4	small device mounting side clamp	4	Blue
CABLE MANAGEMENT	FWD-D-RING	"D" style ring cable management	1	Blue
	FWD-C-RING	"C" style ring cable management	1	Blue
	FWD-TSW-15	hook & loop tie saddles	15	Blue

ACCESSORIES COMPATIBLE WITH ALL UNIVERSAL HOLE PATTERN SHELVES, PANELS & STRIPS



## FORWARD FAMILY CABLE MANAGEMENT



### DROP IN YOUR CABLE MANAGEMENT

- Drop into Lever Lock™ compatible rackrail brackets on a BGR Series enclosure for quick tool-free installation



### UMV CABLE MANAGEMENT

- Punched with our patented Universal Hole Pattern

### 3" WIRE GRID LACE CABLE MANAGEMENT

- 3" width takes up minimal space with maximum cable routing
- Route cables vertically, horizontally or diagonally on the wire grid



works with  
Forward cable  
management  
accessories

#### ACCESSORIES COMPATIBLE WITH LEVER LOCK™ RACKRAIL BRACKET

VERTICAL CABLE MANAGEMENT		Part #	Width (")	Height (RU)
		WIDE WIRE GRID LACE	FWD-LACE-WB3-16-21	3"
FWD-LACE-WB3-24-27	3"		24 - 27	
FWD-LACE-WB3-35-40	3"		35 - 40	
FWD-LACE-WB3-41-42	3"		41 - 42	
FWD-LACE-WB3-44-45	3"		44 - 45	
UNIVERSAL HOLE PATTERN	FWD-LACE-UMV-16-21	1.25"	16 - 21	
	FWD-LACE-UMV-24-27	1.25"	24 - 27	
	FWD-LACE-UMV-35-40	1.25"	35 - 40	
	FWD-LACE-UMV-41-42	1.25"	41 - 42	
	FWD-LACE-UMV-44-45	1.25"	44 - 45	



**AV INTEGRATION**  
**BECAUSE TWO HANDS ARE BETTER THAN ONE**



- Drop into Lever Lock™ compatible rackrail brackets on a BGR Series enclosure for quick tool-free installation
- Includes (2) full height bright white lights
- Unmatched visibility with lighting fixed at an optimal 45° angle facing into the enclosure
- Includes
  - IR sensor for automatic on/off with the door
  - Dimmer allowing you to set the light brightness to your preference
  - UP1 panel to mount IR/Dimming module on the rackrail
- Mount anywhere from front to rear
- Includes all hardware for mounting in any other Middle Atlantic enclosure

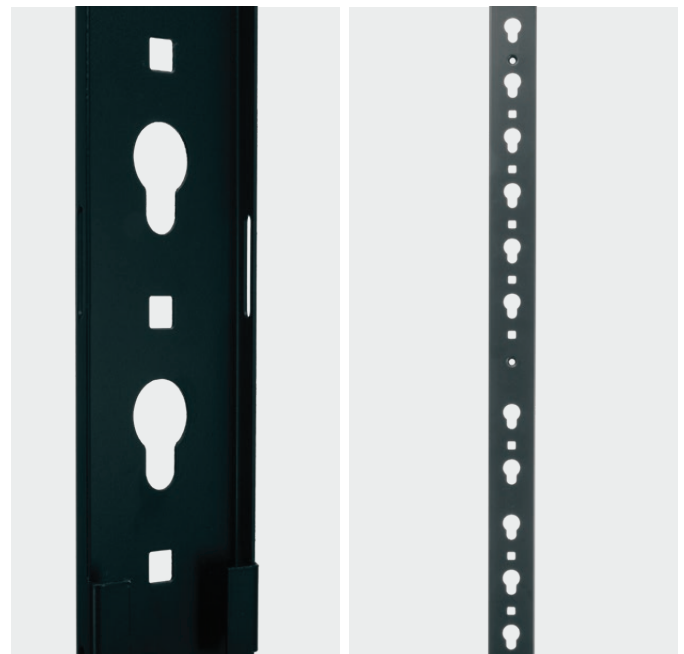


UTILITY LIGHTING	Part #	Height (RU)
	FWD-LT-UTL-16-21-D	16 - 21
	FWD-LT-UTL-24-27-D	24 - 27
	FWD-LT-UTL-35-40-D	35 - 40
	FWD-LT-UTL-41-42-D	41 - 42
	FWD-LT-UTL-44-45-D	44 - 45

**ANY POWER STRIP**  
**YOU CAN MOUNT IT**



- Drop-in installation into Lever Lock™ compatible rackrail brackets
- Mounting flexibility front to back along multiple rackrail bracket styles
- Accepts any button mount style power strips (Raritan, ServerTech, etc.) as well as the PDT Series, PD Series and MPR Series
- Durable flanged steel construction
- Includes all hardware needed for any Middle Atlantic Products rackrail bracket style (except SNE)



POWER MOUNTING STRIP	Part #	Height (RU)
	FWD-UVPB-42-45	42-45

## FORWARD FAMILY UPS BASE



### YOUR AV SYSTEM AND YOUR BACK ARE GOING TO THANK YOU



- Save critical equipment and labor at the same time - No need to rackmount a UPS again!
- Front and Rear perforated locking access panels for security while maintaining visibility of the UPS
- Easily bolts to BGR Series rack using threaded Rivnut inserts
- Accepts LF-HD leveling feet (for non-caster versions)
- Comes to you with a UPS-2200R pre-installed from our factory ready to be integrated
- UPS-2200R Features:
  - Hot swappable battery for easy service with front panel access
  - Line Interactive UPS technology for quiet operation and energy savings
  - Fast 4 millisecond transfer time (1/4 cycle) for no system disruption or lockups
  - Pure Sine Wave technology provides the cleanest power for sensitive devices
  - Automatic Voltage Regulation ensures stable 120VAC output

#### ACCESSORIES COMPATIBLE WITH BGR

UPS BASE	Part #	Compatible BGR Depth	UPS Included	Amps
	FWD-BS-2KVA-BGR27	27"	UPS-2200R	20
	FWD-BS-2KVA-BGR32	32"	UPS-2200R	20
	FWD-BS-2KVA-BGR38	38"	UPS-2200R	20
	FWD-CBS-2KVA-BGR27	27"	UPS-2200R	20
	FWD-CBS-2KVA-BGR32	32"	UPS-2200R	20
	FWD-CBS-2KVA-BGR38	38"	UPS-2200R	20

# FORWARD FAMILY PRECONFIGURED BGR

NEW

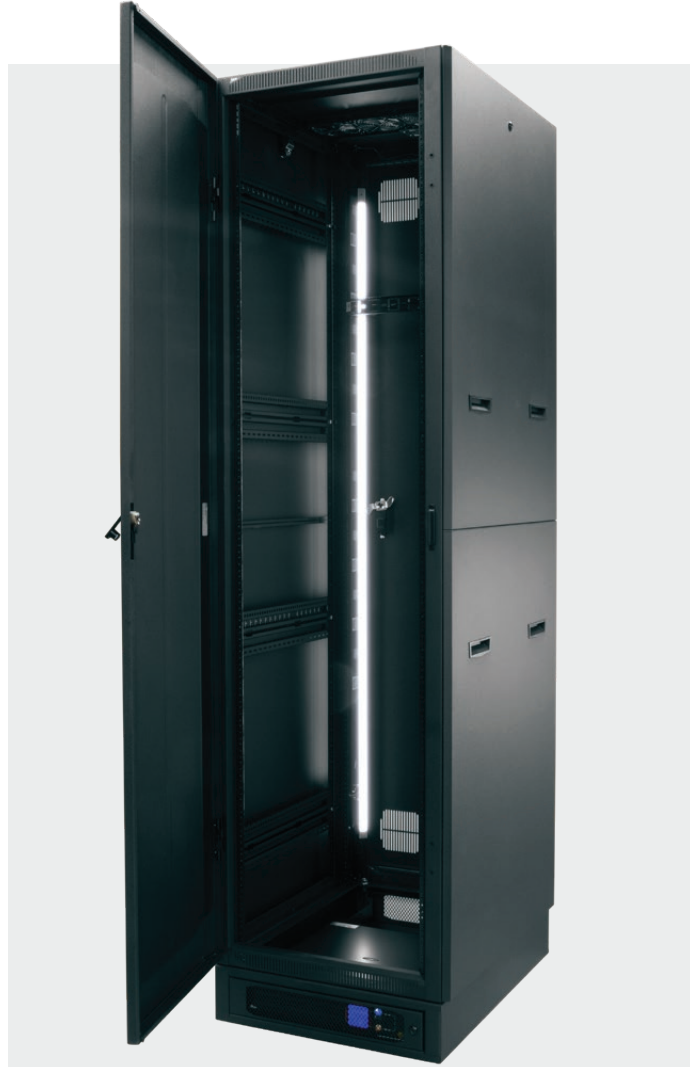
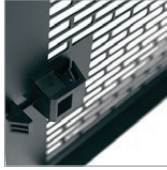
## PRECONFIGURED WITH ALL FORWARD OPTIONS AND ACCESSORIES + MORE

Includes Forward Accessories  
& Options:

- UPS Caster Base
- Blank Panels
- Lacer Bars
- UMV Cable Management
- 3" Wire Grid Lace Cable Management
- Tie Saddles & Velcro
- Small Device Mounting Clamps
- Lighting

Includes additional Middle Atlantic  
Favorites:

- Lever Lock™
- Select Series Vertical PDU with RackLink™
- DC Fan Top
- Solid Front Door
- Side Panels
- Leveling Feet
- Rackscrews

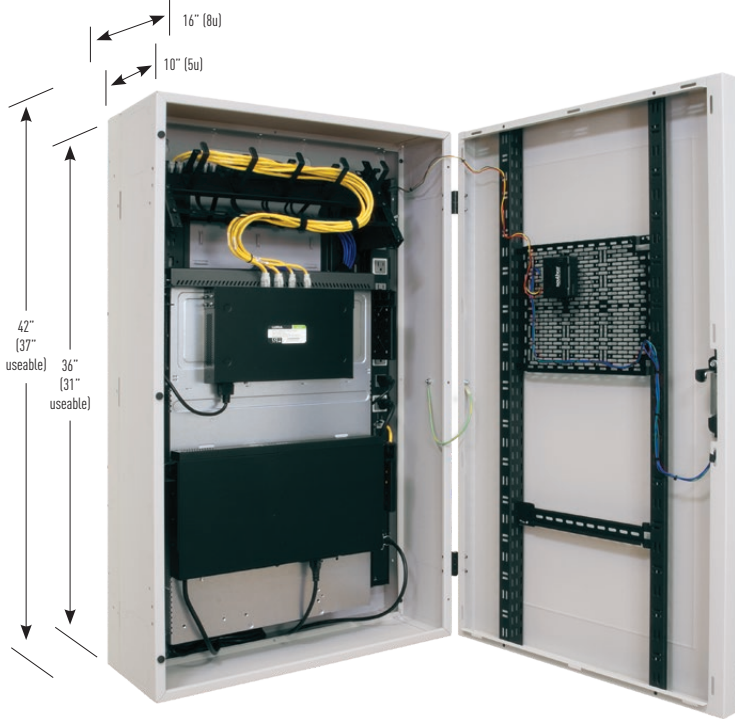


### PRE-CONFIGURED BGR

	Part #	Includes	QTY	Description	
PRE-CONFIGURED	BGR-4532-FWD	RACK	BGR-45-32	1	45RU, 32" D BGR Series- the #1 AV Rack
		POWER	FWD-CBS-2KVA-BGR32	1	Forward UPS Caster Base with UPS-2200R
			RLNK-1615V	1	Select Series PDU with RackLink™, Vertical, 16 Outlet, 15A
		BLANK PANELS	FWD-EB1	4	Forward 1RU Blank Panel
			FWD-EB2	2	Forward. 2RU Blank Panel
		CABLE MANAGEMENT	FWD-LB-1A-4PK	1	Forward straight "L" style lace bar, 4 pack
			FWD-LB-2A-4PK	1	Forward 2" offset "L" style lace bar, 4 pack
			FWD-LACE-WB3-44-45	1	Forward 3" Wire Grid Lace, 44-45RU
			FWD-TSW-15	1	Forward hook & loop tie saddles, 15 pack
			FWD-LACE-UMV-44-45	1	Forward Vertical Universal Hole Pattern, 44-45RU
			FWD-LL-VC21	2	Lever Lock™ Vertical Channel
		SMALL DEVICE MOUNTING	TW12	2	Cable Management Hook and Loop Strap, 12 ct.
			LL-VP2110	1	Lever Lock™ Vertical Plate
		LIGHTING	FWD-SIDECLMP-4	2	Forward Small Device Mounting Clamp
		OUTER PANELS	FWD-LT-UTL-44-45-D	1	Forward Utility Lighting
			BFD-45	1	BGR Solid Front Door, 45RU
		THERMAL MANAGEMENT	BSPN-45-32	1	BGR Side Panels, 45RU, 32" Deep, Pair
			BGR-276FT-FC	1	BGR Fan Top, 276 CFM, w/ Controller
		HARDWARE	LF-HD	1	Leveling Feet, Heavy Duty
			HP	1	Rackscrews, 10-32, truss-head, 100 pc.

# RACKS AND ENCLOSURES

## VWM SERIES



### MOST VERTICAL VERSATILITY

### LOW-PROFILE WALL CABINET



The VWM Series patented design features multiple planes of vertical mounting, it allows deeper equipment to be mounted parallel to the wall, and is the first low profile cabinet to offer intuitive mounting for small devices.

VWM cabinets are ideal for small to medium networking, surveillance and monitoring, distributed audio and paging systems.

- Maximizes space and expertly handles the highest density of components
- Unique design allows mounting of rackrail where it's needed: left, center or right justified and multiple vertical positions
- Choose pivoting or fixed rackrail: with multiple RU options available, all rackrail features both 10-32 thread and cage nut



#### PRE-CONFIGURED MODELS\*

Pre-Configured Part #	Door	Rackrail Included	Height	Depth	Finish	Replaces
WWM-2-2-36K-PW	Solid	2 pivot RU, 2 fixed RU	36"	12"	putty	HDR-4
WWM-4-5-36K-PW	Solid	4 pivot RU, 5 fixed RU	36"	12"	putty	HDR-9
WWM-4-5-42K-PW	Solid	4 pivot RU, 5 fixed RU	42"	12"	putty	HDR-9X
WWM-SD-4-36K-BW	Split, solid top	4 fixed RU	36"	12"	black	WRS-4
WWM-SD-6-36K-BW	Split, solid top	6 fixed RU	36"	18"	black	WRS-6
WWM-SD-8-36K-BW	Split, solid top	8 fixed RU	36"	18"	black	WRS-8
WWM-PD-4-36K-PW	Split, plexi top	4 fixed RU	36"	12"	putty	WRP-4
WWM-PD-6-36K-PW	Split, plexi top	6 fixed RU	36"	18"	putty	WRP-6
WWM-PD-8-36K-PW	Split, plexi top	8 fixed RU	36"	18"	putty	WRP-8

\*Additional options including more colors, greater flexibility in door configuration as well as equipment mounting additions available when configuring the VWM in the design tool.



### LOOKING TO CUSTOMIZE?

Design a VWM solution that fits your precise needs at [middleatlantic.com](http://middleatlantic.com)

#### RACKRAIL\*

Part #	Rail Type	Useable Rackspace	Mounting Configurations	Fits 10" Deep VWM	Fits 16" Deep VWM
WWM-RR-2	fixed	2	horizontal vertical diagonal	X	X
WWM-RR-4	fixed	4		X	X
WWM-RR-5	fixed	5		X	X
WWM-RR-6	fixed	6			X
WWM-RR-8	fixed	8			X
WWM-RR-PIV-2	pivoting	2		100°	X
WWM-RR-PIV-4	pivoting	4	X		X

\*all rackrail options feature both 10-32 thread and cage nut

#### ACCESSORIES

Part #	Description
LL-WWM-BPK	Lever Lock™ backpan kit, includes 6" Lever Lock plate (LL-VP176-SWP)
LL-WWM-36SP	Lever Lock™ front door kit fits 36" split door, includes 10" Lever Lock plate (LL-VP1710)
LL-WWM-36S-42SP	Lever Lock™ front door kit fits 36" solid/42" split door, includes 10" Lever Lock plate (LL-VP1710)
LL-WWM-42S	Lever Lock™ front door kit fits 42" solid door, includes 10" Lever Lock plate (LL-VP1710)
LL-VP176-SWP	17" high 6" deep, vertical Lever Lock™ plate features structured wiring pattern
WWM-6BR-BP	back pan brush grommet

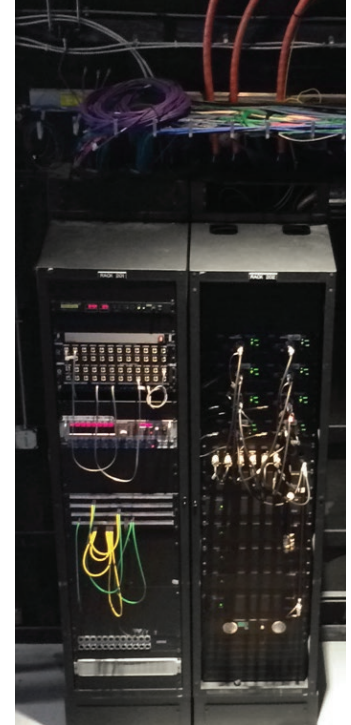
# RACKS AND ENCLOSURES

## SR SERIES

NEW

### NEW WIDER SIZE THAT SAVES SPACE

The innovative SR Series Pivoting Wall Rack combines the capacity of a floor standing rack with the compact footprint of a wall rack to handle a broad range of AV, security, broadcast and data installations



- Now with more depth for denser cabling applications
- Installation ease with the patented Tool Free Quick-Mount™ system for center section mounting to the backpan
- “Bonus” 4 rackspace in base for mounting a UPS or other equipment
- Industry’s first seismic rated wall rack series, delivering tip and/or vibration resistance when its desired or required

### CERTIFICATIONS

- Seismic Certified
- UL Listed
- GREENGUARD Certified
- Product Environmental Profile



	Part #	Width	Dimensions
STANDARD	SR-24-28	23.5"	28 3/8" D X 62 3/4" H
	SR-24-32	23.5"	32 3/8" D X 62 3/4" H
	SR-40-22	23.5"	22 3/8" D X 90 3/4" H
	SR-40-28	23.5"	28 3/8" D X 90 3/4" H
	SR-40-32	23.5"	32 3/8" D X 90 3/4" H
	SR-46-28	23.5"	28 3/8" D X 101 1/4" H
NEW WIDTH	SR28-24-32	28"	32 3/8" D X 62 3/4" H
	SR28-40-32	28"	32 3/8" D X 90 3/4" H
	SR28-46-32	28"	32 3/8" D X 101 1/4" H

# DISPLAY CARTS

## FLEXVIEW SERIES IFP CARTS



### FOR EVERYONE AND EVERY SPACE

The FlexView Series IFP Cart is an interactive flat panel mounting solution with an unmatched systems approach, accessibility for all heights, and aesthetics that blend the technology into any space.

- Superior capacity for IFPs or displays ranging from 60"-102", 1200x600 VESA pattern and up to 300 lbs.
- Equipment storage with 2RU vertical mounting and removable, tool-free Lever Lock™ for small device mounting as well as power distribution built in
- Available in white and black bases with optional finishes in wood and textured, metal HPL colors
- Fixed or height adjustable, ADA compliant electronic lift models

### CERTIFICATIONS

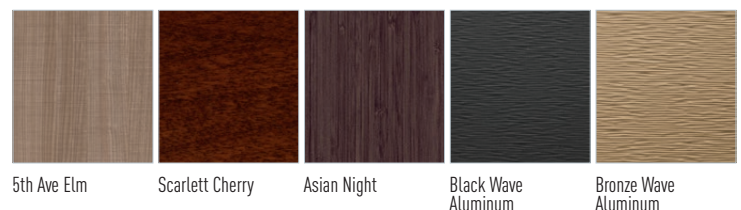
- ADA Compliant
- UL Listed
- GREENGUARD Gold

### COMPLEMENTARY PRODUCTS

Part #	Description
FVS-CMTB-1200-BK	black camera mount
FVS-CMTB-1200-WH	white camera mount
FVS-SBBU-1200	soundbar bracket
FVS-Leverlrs-4	leveling feet



### FINISH OPTIONS



Part #	Display Height Adjustability Method	Color	Casters or Leveling Feet™	Display Height from Floor		Overall Height without Monitor Mounting Brackets and Monitor	Recommended Screen Size	Weight Capacity	Horizontal Vesa Pattern	Max Vertical Vesa Pattern
				Min.	Max.					
VS-1200SC-BHXX	manual	black	casters	40"	60"	69"	60" - 102"	50 lbs. inside max 300 lbs. monitor only max 320 lbs. monitor & accessories max	200, 400, 600, 800, 1000, 1200	600
VS-1200SC-WHYY	manual	white	leveling feet	36"	56"	64 3/4"				
VS-1200EC-BHXX	electric	black	casters	40"	60"	69"				
VS-1200EC-WHYY	electric	white	leveling feet	36"	56"	64 3/4"				

XX = A5 for Black, A0 for 5th Ave. Elm, A3 for Asian Night, B3 for Glamour Cherry, D4 for Black Metawave, D5 for Bronze Metawave  
 YY = A7 for Brite White, A0 for 5th Ave. Elm, A3 for Asian Night, B3 for Glamour Cherry, D4 for Black Metawave, D5 for Bronze Metawave  
 \*Casters are included with cart, leveling feet available as additional accessory (Part # FVS-LEVELERS-4)

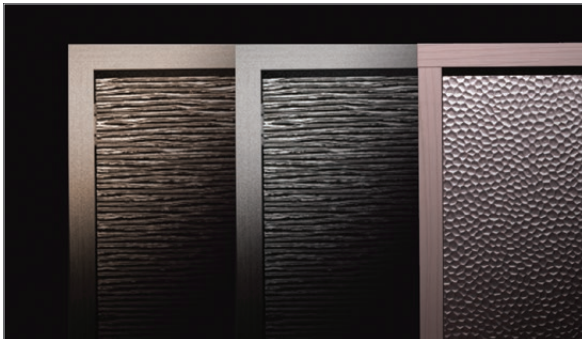
# TECHNICAL FURNITURE

## C3 SERIES

NEW



The Low-Profile 10" depth provides a comfortable reach range for interactive displays above the C3



New metal contrasting doors for a modern look



Flexible storage solutions for high traffic areas and collaboration spaces

### THE ADA COMPIANT CREDENZA

#### BOLD, FLEXIBLE, BEAUTIFUL

This pre-configured, low-profile 10" C3 Series Credenza features the series' hallmark welded steel frame designed specifically to house and protect technology in an ADA compliant low-profile design. It also features a fully designed wood kit with modern and classic finishes so no further customization is necessary.

- Pre-configured to include frame, wood kit, magnetic push latch-- choose from our 11 color options in HPL or thermolaminate finishes
- Tech Kits include thermostatically controlled fan, 7 outlet power strip (15A) and your choice of static or slide out 4RU rack for vertical mounting
- Sleek, updated Moderno style design

#### CERTIFICATIONS

- ADA Compliant



# TECHNICAL FURNITURE

## L7 SERIES



### THE MOST ELEGANT SOLUTION IN HEIGHT ADJUSTABILITY AND ADA

Pioneering the path to designer, height adjustable technical furniture—the L7 Series Lectern, a pinnacle of the workspace desired, height required and aesthetically inspired.



### DESIGNED FOR EDUCATORS

- Ergonomically engineered to adjust to varying height requirements of its users via electronic lift with 10" of vertical adjustment
- Generous 50" x 19" useable surface area provides adequate workspace and room for all required peripheral devices

- Wireless Qi charging pad to charge cellular devices during class
- Additional BYOD connectivity with plenty of USB and AC outlets
- Storage for markers, microphones and wires

### BUILT FOR INTEGRATORS

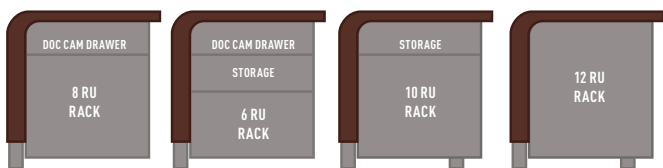
- Additional small device storage equipped with removable, tool-free Lever Lock™ small device mounting hidden just below the worksurface
- Integrated power, cable and thermal management for ultimate system reliability
- Popular AVIP connectivity plates for higher education application
- Unit ships assembled

### CERTIFICATIONS

- ADA Compliant



### 4 CABINET STORAGE SOLUTIONS



### LECTERNS

Part #	Surface Color	Accent Base Color
L7-F61A-WD-SLHB3	Cherry	Silver
L7-F61A-WD-SLHB9	Montana Walnut	Silver
L7-F61A-WD-SLHA7	White	Silver

### SURFACE CONFIGURATION

Part #	AVIP Connectivity, USB & Convenience Outlets	Basic Storage	Qi wireless Charging	Extra Storage or Touchscreen
L7-FL-CON	X	X	X	Extra Storage
L7-TUR-C760	X	X	X	Cutout for Crestron TSW 760
L7-TUR-C1060	X	X	X	Cutout for Crestron TSW 1060

### CABINET STORAGE

Part #	RU	Additional Storage
L7-6U-DS-U	6 RU	Document Camera Drawer and Storage Drawer
L7-8U-D-U	8 RU	Document Camera Drawer
L7-10U-S-U	10 RU	Storage Drawer
L7-12U-U	12 RU	NA



# POWER

## PREMIUM + PDU WITH RACKLINK™

NEW

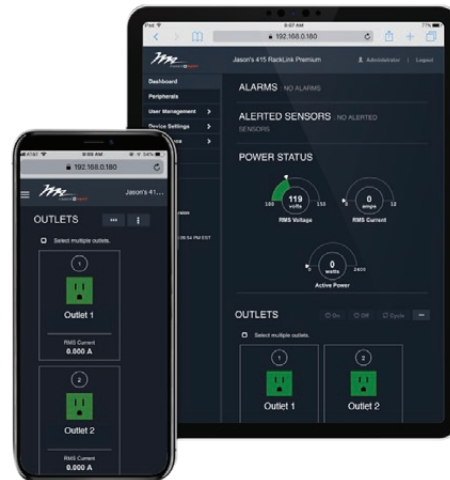
### SIMPLE SYSTEM SETUP WITH ADVANCED CAPABILITIES



Securely monitor, control and manage your AV systems by unleashing the full potential of RackLink™ with the new Premium+ PDU.

Get individual outlet power cycling/metering, advanced system monitoring and control and maximum network security with Premium+ PDUs with RackLink .

- Save programming with integrated scheduling, variable timed sequencing, ping sequencing, auto healing, thresholds, and multiple notification options.
- Easily connect to control and IT systems with universal compatibility through custom drivers, SNMP v3/MIB, RESTful API, and 3rd party integrations.
- Connecting via Wi-Fi with a 3rd party dongle dramatically reduces the number of Ethernet runs required
- Configure one PDU or a thousand PDUs in a matter of moments with the ability to save your configuration file
- Remotely update firmware without having to shut down the PDU, ensuring consistent system uptime



Part #	Form Factor	Amperage	Rear AC Outlets	Convenience AC Outlet	Protection
RLNK-P915R	Horizontal	15	8	1	2-stage
RLNK-P915R-SP			8	1	Series
RLNK-P920R		20	8	1	2-stage
RLNK-P920R-SP			8	1	Series
RLNK-P415	Compact	15	4		2-stage
RLNK-P420		20	4		2-stage

### ACCESSORIES AND OPTIONS

Part #	Description	Daisy Chain Max
RLNK-TEMP	Monitors temperature & humidity	32
RLNK-CONT	2 active & 5 digital Normally Closed (NC) or Normally Open (NO) contact closure	32

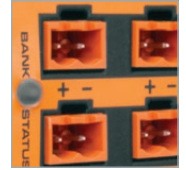
## POWER

### HIGH POWER DC DISTRIBUTION



## HIGHEST AVAILABLE POWER

Design on reliability with the universal DC power solution equipped with the highest available power in the market—complete with superior current capacity and an industry-leading quantity of outputs!



- Industry-leading number of outputs with power distributed to as many as 24 devices
- Maximum current capacity, up to 300W of power
  - 5V, 40A Max (200W)
  - 12V, 25A Max (300W)
  - 24V, 12.5A Max (300W)
  - 12V and 24V, 12.5A and 6.25A respectively (300W)
- Reliable multi-level protection on both AC input and DC outputs to ensure maximum uptime
  - MOV surge and overload protection on the AC input
  - Individual redundancy built in with auto-resetting PTC fused overload protection on each individual output
- Greater mounting flexibility with multi-mount design that fits in 1 rackspace or can mount at the back or side of the rack simply by rotating mounting brackets
- LED indicator lights alerting maximum capacity on each voltage bank
- Leads trimmed to suitable length leaves less cable to manage, enhancing aesthetics and increasing airflow
- Ultra-quiet, thermostatic temperature controlled fan with automatic speed adjustment

Part #	Description	Outputs	Watt Max Output
PD-DC-200-5V	maximum power, 200W DC power distribution	5V	200
PD-DC-300-12V	maximum power, 300W DC power distribution with 12V outputs	12V	300
PD-DC-300-24V	maximum power, 300W DC power distribution with 24V outputs	24V	300
PD-DC-300-12-24V	maximum power, 300W DC power distribution with split-bank	12V and 24V	300

## The Foundation

### The Amazing AV Experience Starts Here

The foundation is more than just the rack. It's delivering optimal power to each piece of equipment small and large, it's clean, bundled cabling separated for signal integrity, it's removing heat to keep the gear operating properly and it's leaving the job fit for future servicing.



## POWERing AV

### We Think, Design & Build with the AV Application in Mind

Power breathes life in the AV system. But, power doesn't just turn everything on—making it function and work together—it enhances the system by bringing reliability, protection and control.

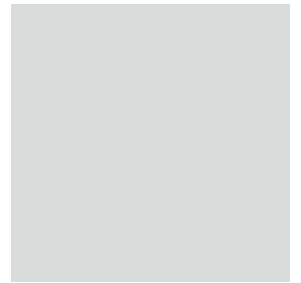


## Frame To Furniture

### Furniture Built Around the Rack You Trust

We believe that you shouldn't have to choose between reliable systems and beautiful design. That's why all our furniture is built around the rack you trust.





**Middle Atlantic Products**

WHAT GREAT SYSTEMS ARE BUILT ON | [legrandav.com](http://legrandav.com)

USA P 800.266.7225 E [av.support@legrand.com](mailto:av.support@legrand.com)

CANADA P 888.766.9770 W [middleatlantic.com](http://middleatlantic.com)

A brand of  **legrand**

©2019 Middle Atlantic Products. All other brand names or marks are used for identification purposes and are trademarks of their respective owners. All patents are protected under existing designations. Other patents pending.

**LEGRAND | AV** C2G | Chief | Da-Lite | Luxul | Middle Atlantic | Vaddio | Wiremold