

HALOHOME™

WHOLE HOME SMART LIGHTING SYSTEM



HALO
HOME

 **Bluetooth®**

Smart lighting is the new standard.

HALO Home is a flexible new approach to smart home lighting. Our system offers a range of Bluetooth® fixtures, controls and accessories that work seamlessly together. From a single light to an entire home, your smart lighting search starts and ends here.



HALO
HOME



Simple. Smart. Secure.

Today, homeowners expect lighting that fits their lifestyle. The HALO Home system lets you easily build a lighting plan that meets your needs, enhances convenience and aesthetics, saves energy and adds security.

Smart lighting – new standard.

HALO Home is a flexible new approach to smart home lighting. Our system offers a range of fixtures, controls and accessories that work seamlessly together. Easily configure lighting via Bluetooth connection using any smart device. From a single light to an entire home, your smart lighting search starts and ends here. No internet or hub required to operate.

Indoor + Outdoor Control



HALO Home App Features



ON/OFF



White Tuning



Dimming



Groups



Scenes



Schedules



Timers



Sunrise & Sunset

HALO Home App



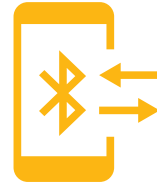
Install

Install HALO Home Bluetooth-enabled products



Connect

Download the secure HALO Home App



Control

Control your lights with your mobile device

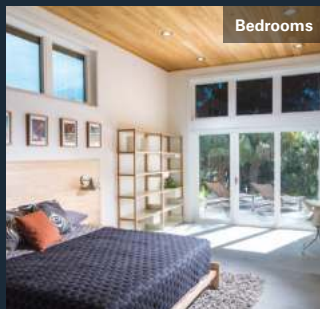
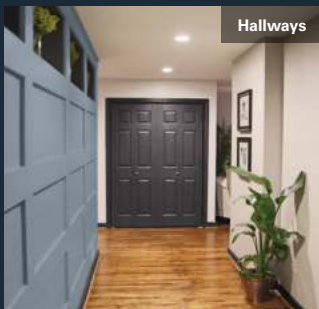
HALO Home app

Our user-friendly mobile app lets you control lighting from your fingertips, (and from anywhere in the world with the optional Smart Internet Access Bridge). Available for iOS and Android, it features dimming, adjustable white tuning, grouping, automatic scheduling and more.



Flexible and scalable

HALO Home is a simple and flexible connected option, with the ability to install as little as one smart light or scale up to control the entire home through the easy-to-use HALO Home app.



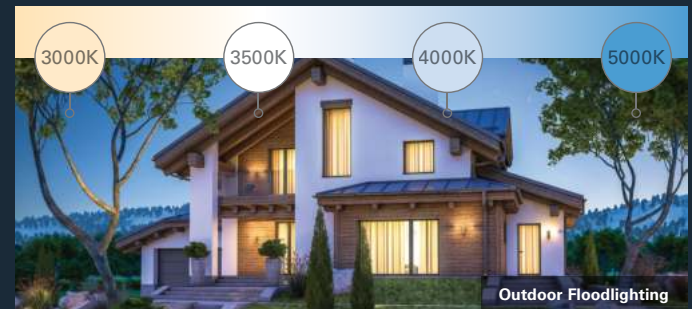
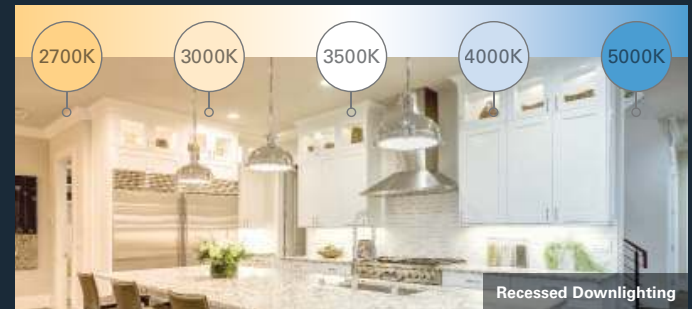
Voice control compatible

Customize your home lighting with voice command. HALO Home is compatible with Amazon Alexa and Google Assistant products, when paired with the optional Smart Internet Access Bridge.



Adjustable white tuning

Select the perfect color for your mood and beautifully complement your home. The HALO Home smart lighting fixtures provide the ability to adjust color temperatures from 2700K (warm white) to 5000K (daylight).



Smart LED Downlights



Smart Recessed Downlights

Wirelessly control this LED downlight using the HALO Home mobile app.

RL4069BLE40AWH - 4" White | **RL56069BLE40AWH** - 5/6" White

- Adjustable CCT from 2700K - 5000K, 90 CRI
- ON/OFF and Dimming to 5%; Group, Scene and Schedule in app
- Compatible with 4", 5" & 6" standard and shallow recessed housings
- Universal installation with integrated torsion springs and friction clips
- Wet and damp location listed and IC (Insulated Ceiling) rated
- Air-Tite™ certified per ASTM-E283-04
- Diffusing, impact resistant polycarbonate lens
- Edison base adapter included
- Designer trim covers available in 3 finishes* (sold separately)

Lumen Select - Smart Recessed Downlights

Achieve the perfect lighting for any ceiling height with new Lumen Select RLs. Besides dimming and color temperature control, this HALO Home addition lets you adjust the maximum lumen output—all from your fingertips within the HALO Home app.

RL4099BLE40AWH - 4" White | **RL56129BLE40AWH** - 5/6" White

- Available in 4" and 5/6" models
- Select maximum brightness:
 - Choose between 600 and 900 lumens with the 4" model
 - 600, 900, and 1200 lumens on the 5/6" model
- Wireless control via secure Bluetooth connection or HALO Home controls (sold separately)
- ON/OFF, dimming, scene settings, grouping, scheduling and adjust white tuning with free HALO Home mobile app



RL4TRMWH
RL56TRMWH
White (Paintable)



RL4TRMTBZ
RL56TRMTBZ
Tuscan Bronze



RL4TRMSN
RL56TRMSN
Satin Nickel



* Designer trim covers also fits RL Lumen Select Downlights



Smart LED Downlights



NO BRIDGE OR HUB REQUIRED

Smart Surface Mount Downlights (BLD)

Now, you can enjoy all the benefits of connected lighting technology in a sleek, versatile surface mount. The HALO Home Smart Surface Mount Downlight is Bluetooth-enabled and ready to be grouped, programmed, and controlled with the HALO Home app. Unlike recessed lighting, there's no housing or "cans," making it an easy way to replace existing light fixtures with smart, energy-saving LED.

BLD4089BLE40AWH - 4" White | **BLD6089BLE40AWH** - 5/6" White

- Backlit LED technology, with no housing
- Flexible Installation: Mounts to most junction boxes (including "pancake" boxes) and recessed housings (hardware included)
- Adjustable white tuning, from 2700K–5000K
- Dimmable down to 5%
- Use HALO Home app and accessories to group, schedule, set scenes, and control your lighting wirelessly



Floodlights



Outdoor Security - Flood

Wireless security lighting control at your fingertips. ON/OFF, dimming, grouping, set scenes, scheduling and white tuning capabilities.

FTS20CW - White | **FTS20CB** - Bronze

- Adjustable CCT from 3000K - 5000K
- ON/OFF and Dimming to 5%; Group, Scene and Schedule in app
- Light output of over 2000 lumens
- Perfect for wall or eave mount
- Tool-less adjustment
- Available in white or bronze

Outdoor Security – Motion

Control one or a group of fixtures wirelessly using the motion sensor. ON/OFF, dimming, groups, set scenes, schedules and white tuning capabilities. Adjust motion sensor duration, sensitivity and photocontrol settings.

MST20C18W - White | **MST20C18B** - Bronze

- Adjustable CCT from 3000K to 5000K
- ON/OFF and Dimming to 5%; Group, Scene and Schedule in app
- Light output of over 2000 lumens
- Motion sensor has 180° detection area and 50' range
- Perfect for wall or eave mount
- Tool-less head and motion sensor adjustments



Smart Bulb



NO BRIDGE OR
HUB REQUIRED

Smart Bulb- A19

With HALO Home's A19 lamp, anyone can enjoy the benefits of smart lighting. That's because it can be used with fixtures that accept a standard light bulb, instantly transforming lamps, vanities, porch lights and more. Unlike competitors' products, it's Bluetooth-enabled and ready to connect out-of-the-box with all of the features of the HALO Home system features. With no internet service, bridge, or "hub" required, it's simply the easiest smart lighting product out there.

HHA19089BLE40A - Single

HHA19089BLE40A-2PK - Two Pack

HHA19089BLE40A-4PK - Four Pack

HHA19089BLE40A-6PK - Six Pack

HHA19HWB1BLE-2PK - Two Pack with Bridge

HHA19HWAS1BLE-2PK - Two Pack with Anyplace Dimmer

- Adjustable white tuning from warm to cool (2700K - 5000K)
- Dimmable to 5% using HALO Home app or controls (sold separately)
- Suitable for indoor or outdoor use (damp location listed)
- Use with any light fixture that accepts a standard (E26) base*
- Group with other HALO Home devices and control together
- Schedule lighting to turn on/off at your convenience

*Not for totally enclosed fixtures or recessed housing



A19



Smart Light Adapter



NO BRIDGE OR
HUB REQUIRED

Smart Light Adapter

The HALO Home Smart Light Adapter lets you control non-smart fixtures wirelessly with the HALO Home app. The Smart Light Adapter can be used to add wireless control to any light or group of lights. The Smart Light Adapter enables individual fixture control, dimming, groups scenes and schedules from a mobile device or tablet. Combine with more HALO Home products to create a whole home lighting system.

HWAD1BLE40AWH - White

- Works with non-smart dimmable LED fixtures only
- ON/OFF and dimming; Groups, Scenes and Schedules in app
- 120V input, 5% dimming
- Up to 15W LED loads
- Operates using secure Bluetooth network
- Recessed housing only

In-Wall Dimmers



Only
use with
non-smart
lights

Only
use with
HALO Home
lights

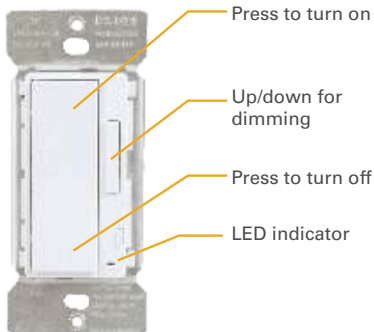


In-wall Smart Dimmer

Turn standard/non-smart lights into smart lights – enabling mobile ON/OFF, dimming, groups, scenes and schedules via Bluetooth, even when switched OFF at the dimmer. Control a single light or an entire room with group settings within the mobile app.

HIWMA1BLE40AWH - White
HIWMA1BLE40ABL - Black
HIWMA1BLE40ALA - Light Almond

- ON/OFF and Dimming; Group, Scene and Schedule in app
- Works with dimmable, LED, CFL, halogen and incandescent bulbs and light fixtures
- Easily control lights with one switch per circuit
- Combine with the In-wall Accessory Dimmers for 3-way or multi-dimmer applications for standard lights
- 120V / AC 60Hz standard house wiring
- Max 600W incandescent/ 300W LED/CFL



In-wall Accessory Dimmer

The HALO Home In-Wall Accessory Dimmer controls your HALO Home lighting devices. It is designed to connect to the HALO Home Bluetooth Mesh network with no hub or internet connection required. The Accessory Dimmer can operate HALO Home lighting fixtures with single, 3-way or multi-switch controls.

For standard lights, the Accessory Dimmer can be used for multi-switch control when paired with HALO Home In-wall Smart Dimmer.

HIWAC1BLE40AWH - White
HIWAC1BLE40ABL - Black
HIWAC1BLE40ALA - Light Almond

- ON/OFF and Dimming; Group, Scene and Schedule in app
- Works with HALO Home Smart LED lighting fixtures
- Easily control HALO Home devices with one or more dimmers
- 120V / AC 60Hz standard house wiring
- Max 300W LED



Anyplace Dimmer



 NO BRIDGE OR HUB REQUIRED

Scene Keypad



Controls
HALO Home
Devices

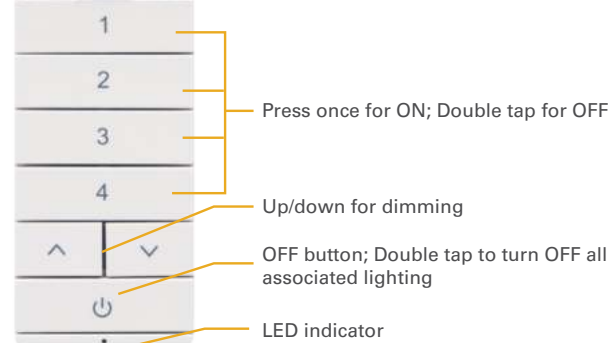
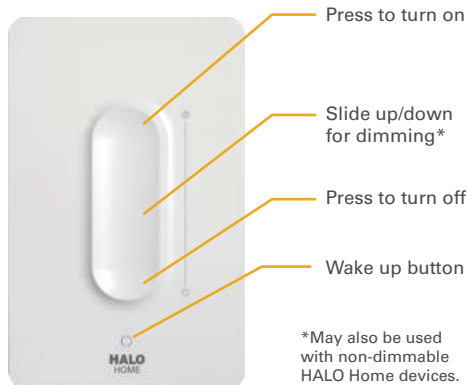
 NO BRIDGE OR HUB REQUIRED

Anyplace Bluetooth Dimmer

The HALO Home Anyplace Bluetooth Dimmer allows for HALO Home Bluetooth Mesh compatible light fixtures to be controlled from a handheld remote controller, through the Bluetooth Mesh connection. The light fixture can be controlled from the remote controller or through the HALO Home mobile app, using a smart phone or other device. The Anyplace Dimmer is designed to connect to the HALO Home Bluetooth Mesh network with no hub or internet connection required.

HWAS1BLE40AWH

HHA19HWAS1BLE-2PK - 2 Smart Bulbs with Anyplace Dimmer



HIWSKA1BLE40AWH - Hardwired

HIWSKB1BLE40AWH - Battery Powered



Bridge



Only use with non-smart lights



Plug-In Dimmer

Smart Internet Access Bridge

Need to control your lights from anywhere in the world or want to adjust lights using just your voice? Simply plug in the HALO Home Bridge and use the app to connect it to your WiFi network.

It's just that easy.

HWP1BLE40AWH

HHA19HWP1BLE-2PK - T2 Smart Bulbs with Bridge

- Compatible with Amazon Alexa for voice control
- Easy to install into standard 100-240V outlet
- Easy set-up
- Remote access to entire HALO Home lighting system using mobile device or web browser from anywhere in the world
- Requires a router, internet connection and HALO Home compatible products to setup and use.

Smart Plug-in Lamp Dimmer

Conveniently control dimming and ON/OFF of standard floor and table lamps with the HALO Home app and accessories. Combine with more HALO Home light fixtures and accessories to create groups and scenes throughout the home.

HWP1BLE40AWH

- ON/OFF and Dimming; Group, Scene and Schedule in app
- Manual ON/OFF and brightness control with the side panel push button
- For use with 110/120V compatible sockets
- Max load of 2.5A, 300W incandescent/ 150W LED/CFL
- Grounded 3-wire power connection



Works with
**Amazon Alexa and
Google Assistant**



Cooper Lighting Solutions

1121 Highway 74 South
Peachtree City, GA 30269
P: 770-486-4800
eaton.com/lighting

Canada Sales
5925 McLaughlin Road
Mississauga, Ontario L5R 1B8
P: 905-501-3000
F: 905-501-3172

Our Lighting Product Lines

Ametrix
AtLite
Corelite
Ephesus
Fail-Safe
Halo
Halo Commercial
Invue
io
Iris
Lumark
Lumière
McGraw-Edison
Metalux
MWS
Neo-Ray
Portfolio
RSA
Shaper
Streetworks
Sure-Lites

Our Controls Product Lines

Fifth Light Technology
Greengate
iLight (International Only)
iLumin
Zero 88

Connected Lighting Systems

Distributed Low-Voltage Power
HALO Home
iLumen Plus
LumaWatt Pro
WaveLinx

Cooper Lighting Solutions

1121 Highway 74 South
Peachtree City, GA 30269
P: 770-486-4800
BringHaloHome.com

© 2019 Cooper Lighting Solutions
All Rights Reserved
Printed in USA
Publication No. BR525047EN
November 2019

Products, specifications and
compliances are subject to
change without notice.

Eaton is a registered trademark.

All other trademarks are property
of their respective owners.